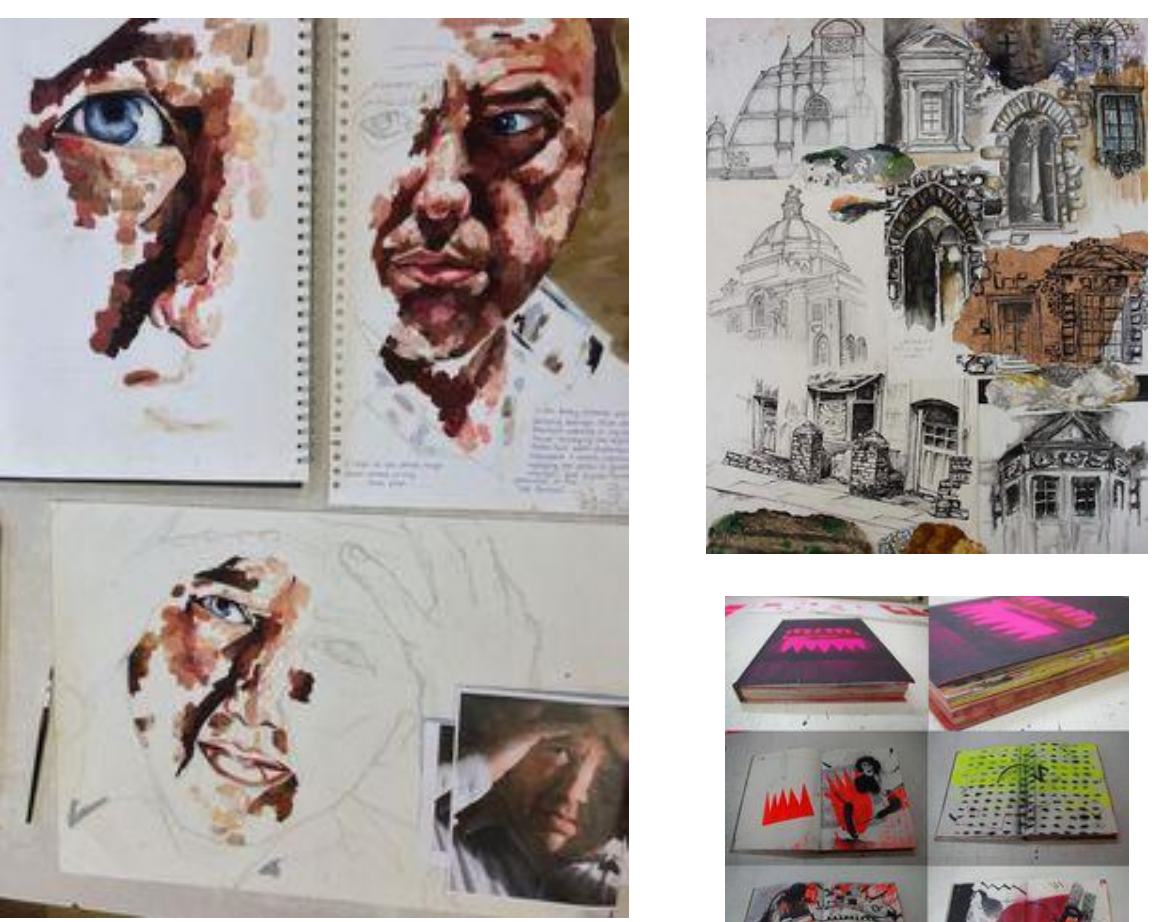


Year 12

Creating a portfolio  
No grade for Year 12 work



Externally Set Assignment  
Worth 40%



05 Work  
Work has provided a rich source of inspiration for artists. Jean-François Millet painted 'The Gleaners', which focused on people working in a rural setting. Fernand Léger produced bold representations of groups of construction workers. Pierre Gonhord photographed Spanish miners and a worker was the central feature in Jacob Epstein's dynamic sculpture, 'The Rock Drill'. Research relevant examples and produce a personal response. [96 marks]

06 Towers  
Towers can be imposing, iconic and industrial. Robert Delaunay produced a series of colourful paintings of the Eiffel Tower and Tony Bevan produced paintings of tower-like structures. Bernd and Hilla Becher made documentary photographs of water towers and Simon Rodia used a variety of materials in making 'The Watts Towers'. Investigate relevant examples and produce a personal response. [96 marks]



Year 13

Separate question papers will be provided for each title. Each question paper will consist of a choice of eight questions to be used as starting points.



KS5 Curriculum Journey

AO1: Develop ideas through sustained and focused investigations informed by contextual and other sources, demonstrating analytical and critical understanding

AO2: Explore and select appropriate resources, media, materials, techniques and processes, reviewing and refining ideas as work develops

AO3: Record ideas, observations and insights relevant to intentions, reflecting critically on work and progress

AO4: Present a personal and meaningful response that realises intentions and where appropriate makes connections between visual and other elements.



Year 13

Personal Investigation  
Worth 60%

Students are required to conduct a practical investigation, into an idea, issue, concept or theme, supported by written material. The focus of the investigation must be identified independently by the student and must lead to a finished outcome or a series of related finished outcomes.

